

# Stratco

---

# Stainless Steel

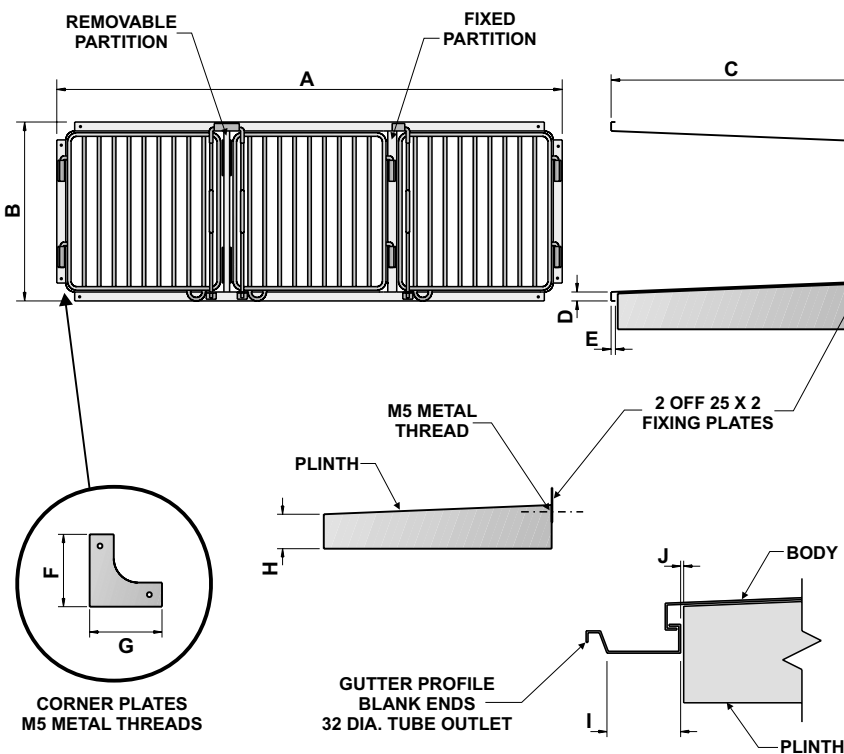
Veterinary Cages .....	58
Dry / Wet Bench Tops & Stands .....	59
Bottle & Bed Pan Rack .....	60
Shower Base .....	61
Kick Plates .....	62
Square Pedestal Drinking Fountain .....	63
Round Pedestal Drinking Fountain .....	64

# VETERINARY CAGES



# Features

Specifically designed for veterinary surgeries for containing domestic & other animals



## FEATURES

- Custom manufactured
- Satin finish
- Manufactured from 304 #4 stainless steel

## STANDARD SPECIFICATION

- Removable or fixed partitions
- Front gutter and 32 dia. tube outlet
- 700 mm, 1050 mm, 1400 mm & 2100 mm standard lengths available
- Manufactured from 1.2 mm 304 #4 stainless steel sheet complying with AS 1449

DRAWING CODE	A	B	C	D	E	F	G	H	I	J
DIMENSIONS	C.L.	500 mm	680 mm	25 mm	12 mm	75 mm	75 mm	100 mm	75 mm	2 mm

• C.L. - Custom Lengths

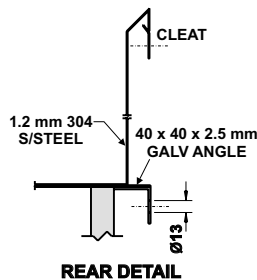
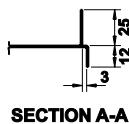
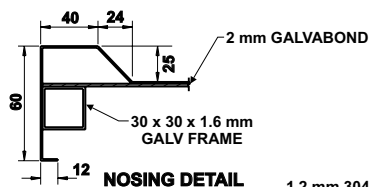
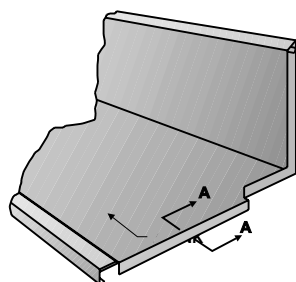
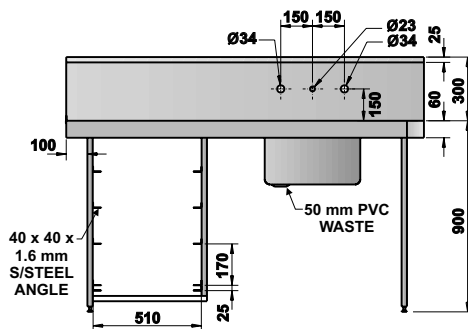
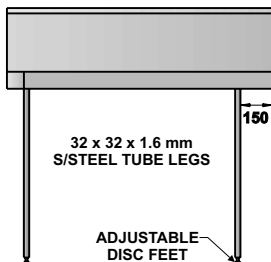
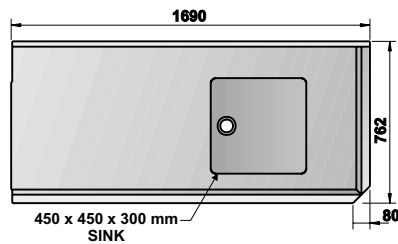
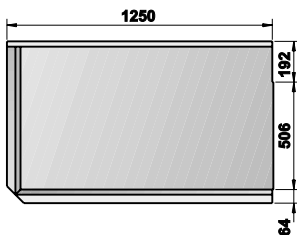
MODEL NO: VETCAGESS  
09/2004

# DRY / WET BENCH TOPS & STANDS



## Features

Features stainless steel square tube stands, a sturdy design for commercial purposes



### FEATURES

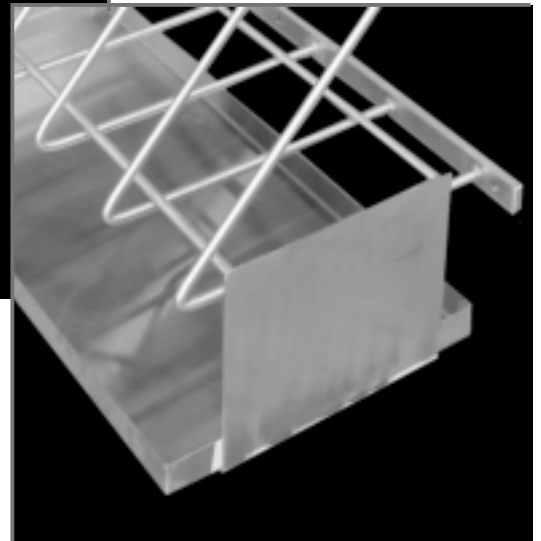
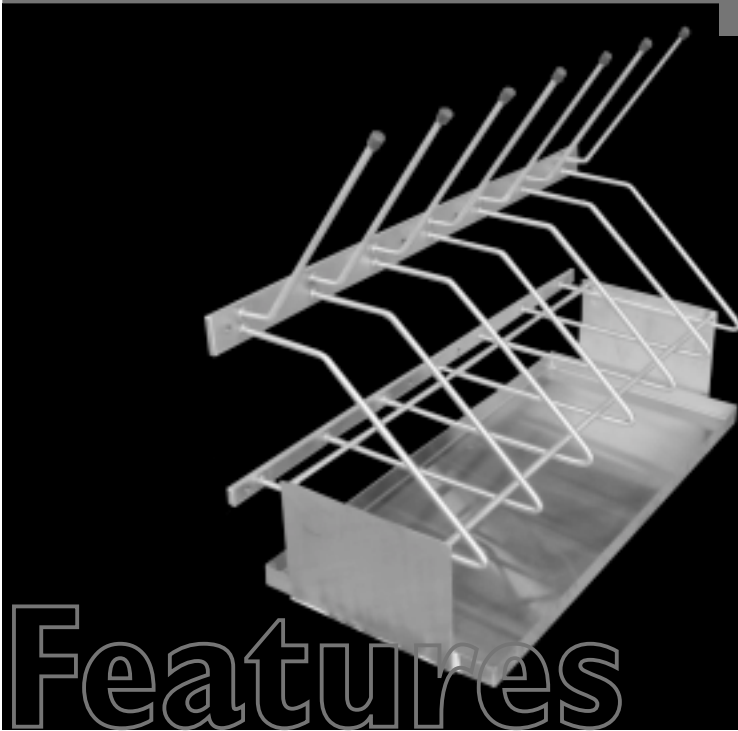
- Custom manufactured
- Satin finish
- Stainless steel square tube stands
- Tap holes to customer specification

### STANDARD SPECIFICATION

- PVC or chrome plated brass plug & washer
- Adjustable disc feet
- 300 mm or optional 150 mm high splash back
- Manufactured from 1.2 mm 304 #4 stainless steel sheet complying with AS 1449

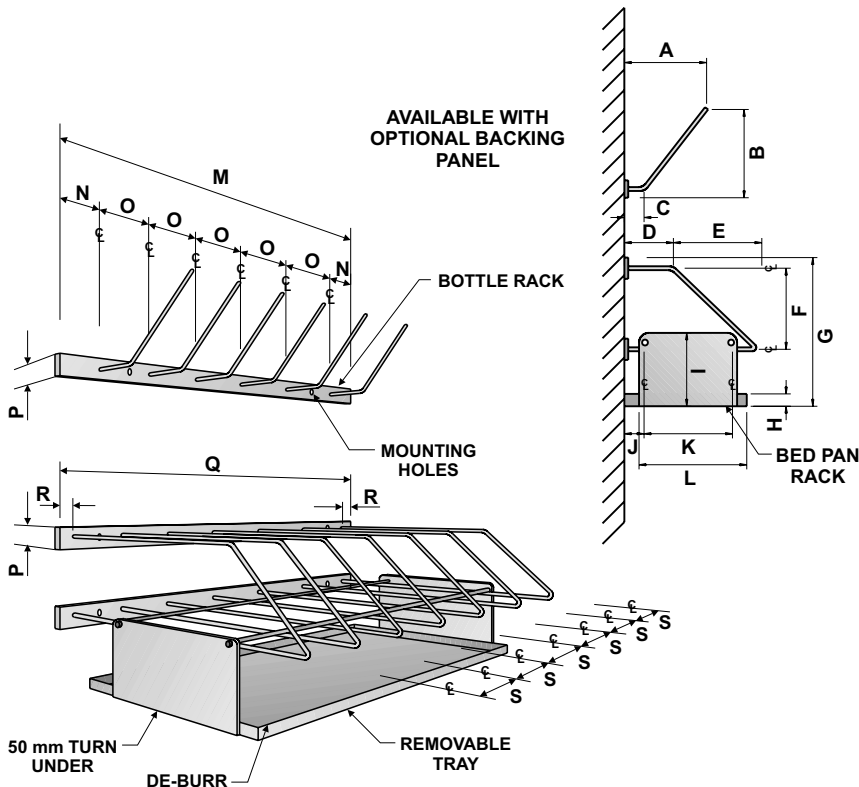
MODEL NO: BENCHUNITSS  
09/2004

# BOTTLE & BED PAN RACK



## Features

Specifically designed for drying bed pans & specimen bottles, this product is applied with sluice sinks & pan room drainers



### FEATURES

- Custom manufactured
- Satin finish
- Removable tray

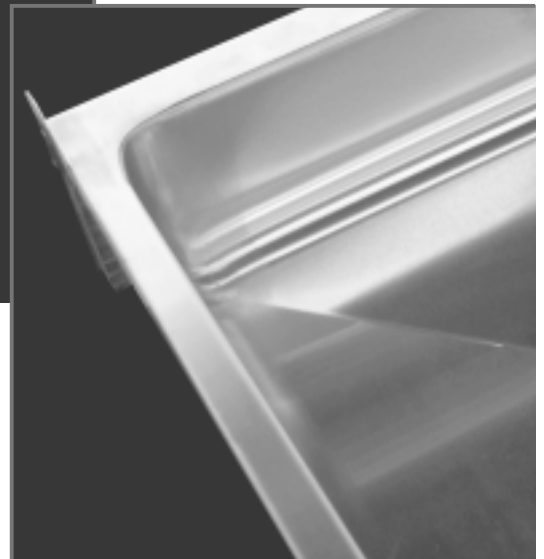
### STANDARD SPECIFICATION

- 10 mm 304 grade stainless rod
- Manufactured from 10 mm 304 #4 stainless steel rod complying with AS 1449

DRAWING CODE	A	B	C	D	E	F	G	H	I	J	K	L	M	N	O	P	Q	R	S
DIMENSIONS (mm)	213 O/A	229 O/A	51	127	229	210	385 O/A	32	190	51	229	279	785	63	132	25	812	25	127

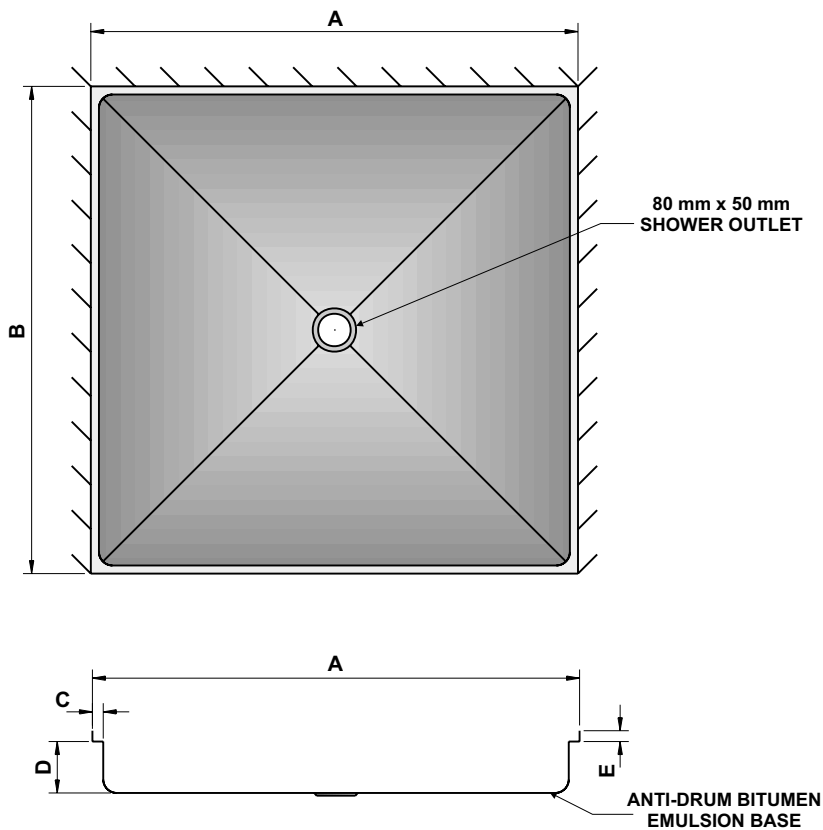
MODEL NO: BPBRSS  
09/2004

# SHOWER BASE



## Features

Featuring radius internal corners for hygienic & easy cleaning



### FEATURES

- Custom manufactured
- Satin finish
- Outlet 80 mm x 50 mm
- Anti-drum bitumen emulsion base

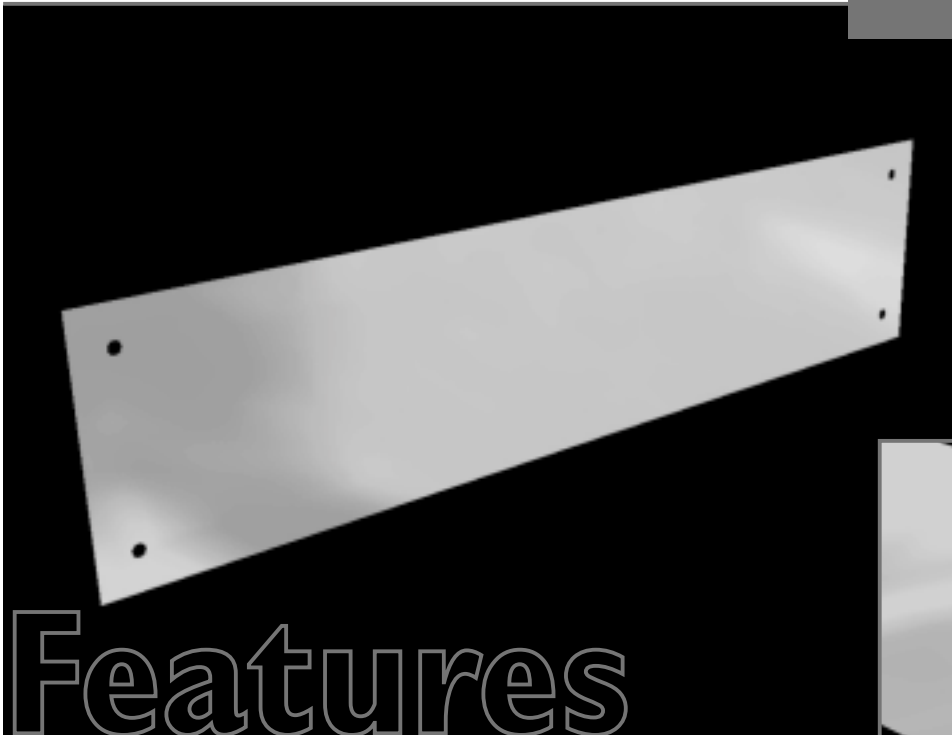
### STANDARD SPECIFICATION

- 20 mm tile rebate
- Radius internal corners
- Positive fall with cross break to outlet
- Manufactured from 1.2 mm 304 #4 stainless steel sheet complying with AS 1449

DRAWING CODE	A	B	C	D	E
DIMENSIONS	900 mm	900 mm	20 mm	95 mm	20 mm

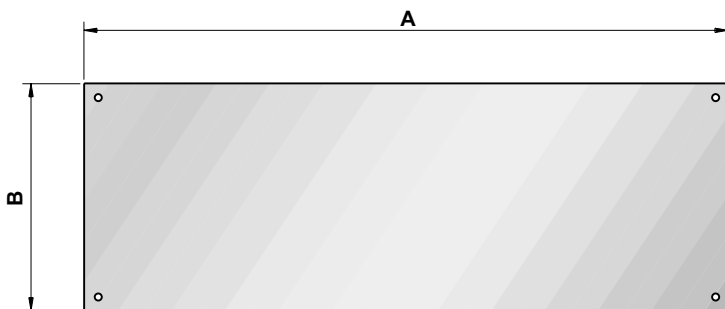
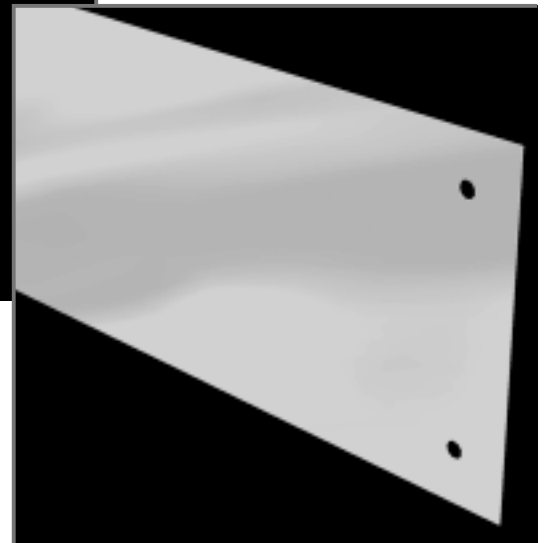
MODEL NO: SBSS  
09/2004

## KICK PLATE



# Features

Featuring radius internal corners for hygienic & easy cleaning



### FEATURES

- Custom manufactured
- Satin finish
- Drilled or undrilled as required
- Skirting boards 0.9 mm 304 #4 stainless steel

### STANDARD SPECIFICATION

- Manufactured from 0.9 mm or 1.2 mm 304 #4 stainless steel sheet complying with AS 1449

DRAWING CODE	A	B
DIMENSIONS	Custom Lengths	Custom Lengths

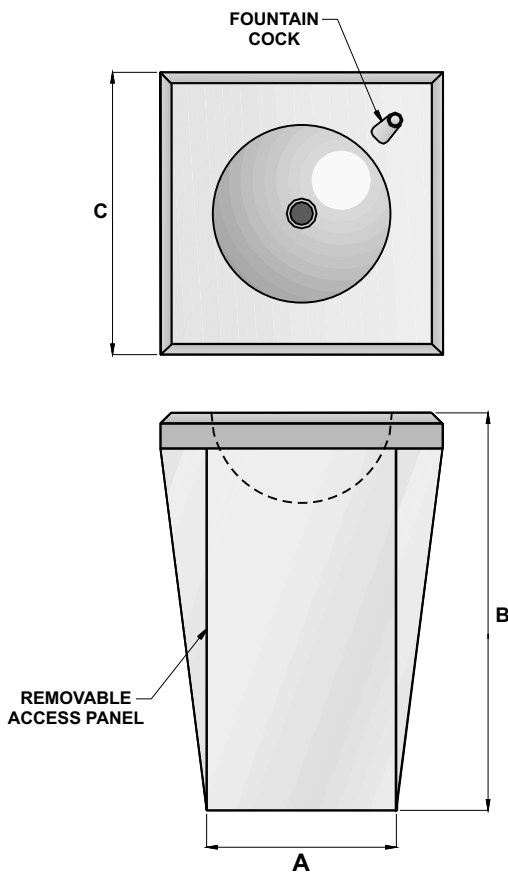
MODEL NO: KIPLSS  
09/2004

# SQUARE PEDESTAL DRINKING FOUNTAIN



## Features

Heavy duty construction, suitable for outdoor use in schools, parks, gardens and reserves.



### FEATURES

- No sharp edges
- Vandal proof construction
- Complete with vandal proof drinking faucet
- Quick and easy installation
- Available in 560 mm or 711 mm heights

### STANDARD SPECIFICATION

- Manufactured from 1.2 mm 304 #4 stainless steel sheet complying with AS 1449

DRAWING CODE	A	B	C
DIMENSIONS	267 mm	560 mm or 711 mm	400 mm

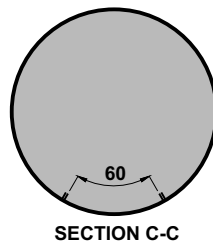
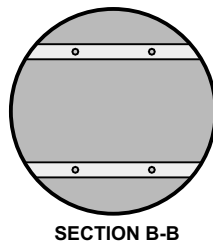
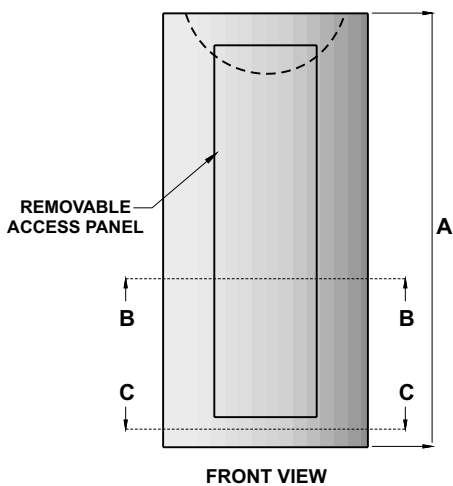
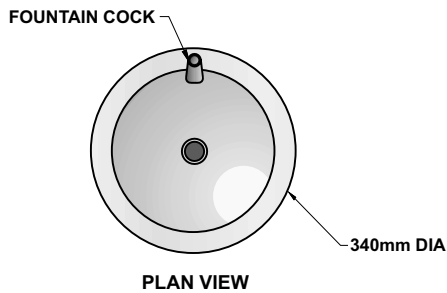
MODEL NO: DRFTSQSS  
09/2004

# ROUND PEDESTAL DRINKING FOUNTAIN



## Features

Heavy duty construction, suitable for outdoor use in schools, parks, gardens and reserves.



### FEATURES

- No sharp edges
- Vandal proof construction
- Complete with vandal proof drinking faucet
- Quick and easy installation
- Available in 720 mm heights

### STANDARD SPECIFICATION

- Manufactured from 1.2 mm 304 #4 stainless steel sheet complying with AS 1449

DRAWING CODE	A
DIMENSIONS	720 mm

MODEL NO: DRFTRNDSS  
09/2004