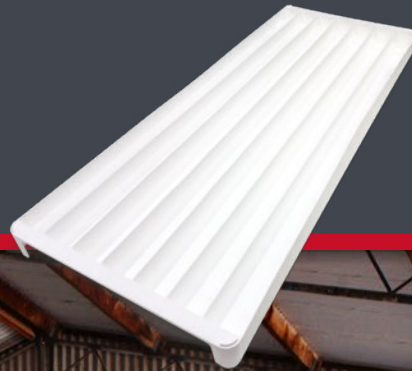


STRATCO OREBOX

PLASTIC MINING CORE TRAYS



David Muller - 0409 895 945
david.muller@stratco.com.au

How To.



STRATCO OREBOX

PLASTIC MINING CORE TRAYS



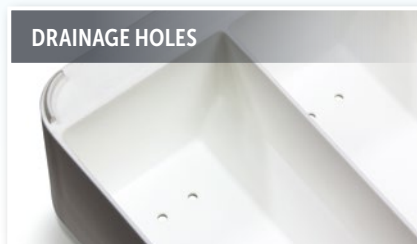
INVEST IN QUALITY

Stratco manufacture the Orebox core tray from injection moulded polypropylene to ensure it is corrosion proof and cannot cross contaminate the stored ore - even those ores that are highly acidic or highly alkaline, or in high levels of humidity. The Orebox core tray is manufactured from white plastic so it is visible underground and at night. Virgin plastics are used for the highest possible level of UV protection.

VERSATILE

The Orebox is available in B, N, H and P sizes, all of which come in standard external dimensions of 1000mm x 385mm for efficient packing in standard shipping containers. Orebox features full height flute dividers and accomodates an individual core length of 950mm.

The Orebox is designed to be stored in stacks on pallets or similar hard stand areas. Each tray is equipped with interlocking lugs at each corner that mate with the tray above, ensuring stable stacking. The stacks of trays are readily strapped for transport.



SUPERIOR DESIGN

- Made from injection moulded, UV stabilised polypropylene plastic.
- Totally corrosion proof.
- No corrosion or cross-contamination of stored ore.
- No magnetic interference with core evaluation.
- Excellent longevity and durability.
- Increased safety... no cuts or handling burns.
- Recyclable.



STRATCO OREBOX

PLASTIC MINING CORE TRAYS

MADE FROM WHITE PLASTIC

- Clearly visible at night and underground.
- Easy to write on.

MANUFACTURED FROM VIRGIN PLASTICS

Virgin plastics consistently deliver the highest degree of UV protection.

ONE-PIECE MOULDING WITH NO POP RIVETS OR WELDS

- Increased strength and reduced failure rate.
- Reduced wastage.
- Increased safety.

BUILT-IN HANDLES AT BOTH ENDS

For easy handling and increased safety.

ROUNDED CORNERS AND SMOOTH EDGES

Provide increased safety and functionality.

CORNER DIMPLES FOR STACKING

For easy, stable stacking and transportation.

COMPUTER MODELLED

To ensure adequate safety margins of mechanical strength.

FLAT BOTTOM

Perfect for use on roller racks.

STRATCO OREBOX
LIDS AVAILABLE!



CORE TRAY MARKERS ARE AVAILABLE FOR NQ, HQ AND PQ OREBOX SIZES. THEY FIT SNUGLY INTO THE TRAY AND DO NOT REDUCE THE SPACE AVAILABLE FOR CORE STORAGE. THE FLAT TOP PROVIDES A BROAD AREA FOR WRITING.

OREBOX DIMENSIONS

Tray Size	External Length	External Width	Number of Flutes	Flute Height	Individual Core Length	Total Core Length/Tray
B-9 (BQ)	1000mm	385mm	9	41.30mm	950mm	8.55m
N-7 (NQ)	1000mm	385mm	7	53.50mm	950mm	6.65m
H-5 (HQ)	1000mm	385mm	5	69.30mm	950mm	4.75m
P-4 (PQ)	1000mm	385mm	4	92.50mm	950mm	3.80m

OREBOX PACKAGING

Tray Size	Pallet Size	Pallet Weight	Trays Per Pallet
B-9 (BQ)	1.0m x 1.16m x 2.30m	270kg	150
N-7 (NQ)	1.0m x 1.16m x 2.15m	200kg	114
H-5 (HQ)	1.0m x 1.16m x 2.20m	170kg	90
P-4 (PQ)	1.0m x 1.16m x 2.10m	180kg	66

CUSTOM QUANTITIES AVAILABLE UPON REQUEST

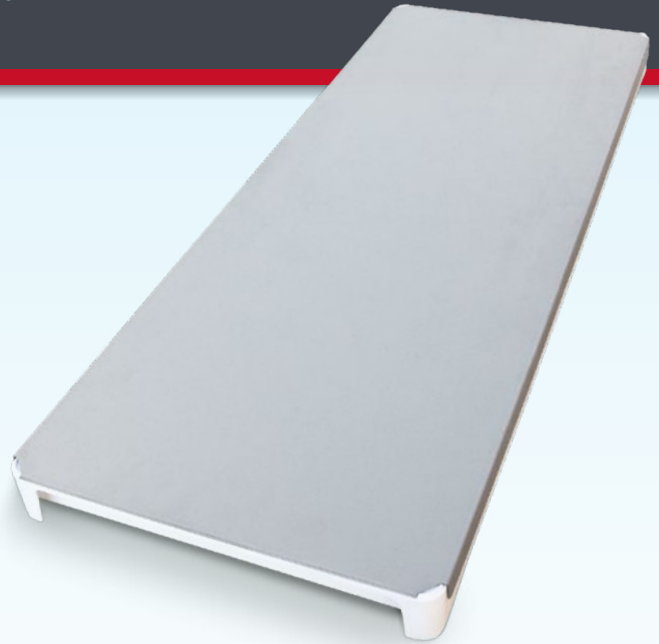
STRATCO OREBOX LIDS

METAL LIDS FOR PLASTIC MINING CORE TRAYS

OUR CORE TRAY LIDS ARE TOPS!

Cover your Stratco Orebox core trays with the best lid for the job. Orebox lids are designed for strength, ease of use and safety.

- Return folded edges
 - adds strength
 - reduces cut injuries.
- Specifically designed for Stratco Orebox core trays.
- Snug fit lid
 - prevents contaminate ingress
 - keeps insects/vermin out.
- Designed to allow Orebox stacking.
- Long lasting Zinc/Al.
- Keeps cores safe and dry.
- ***In stock - ready to go!***



SAFE!



SNUG!



CHOICE!

Specially designed for Stratco Orebox Core Trays!