

 STRATCO

**OUTBACK**<sup>®</sup>

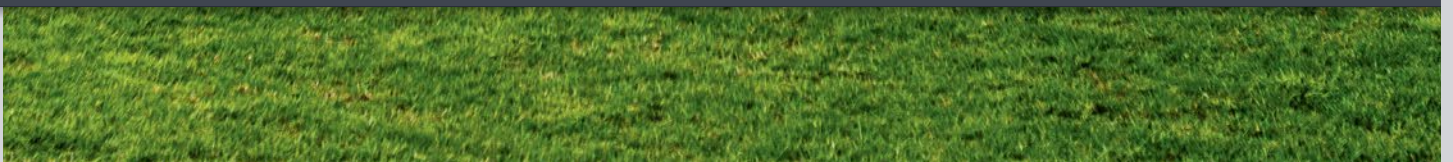
VERANDAHS • PATIOS • CARPORTS • SUNROOF



# Stratco Outback<sup>®</sup>

Verandahs | Patios | Carports | Sunroof

 STRATCO



## Stratco Outback® Patio Range.

With A Design To Suit Every Home

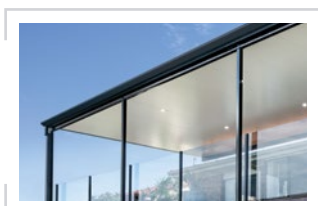
**Flat Roof**  
Page 4



**Gable Roof**  
Page 6



**Cooldek**  
Page 8



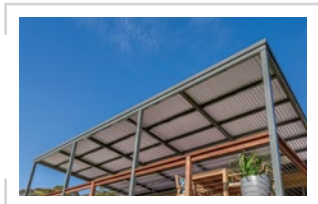
**Sunroof**  
Page 10



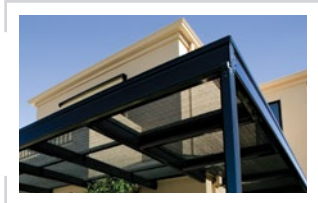
**Curved Roof**  
Page 12



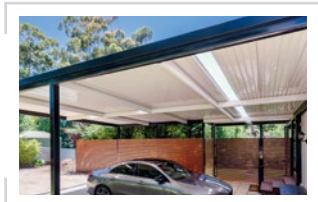
**Skillion Roof**  
Page 13



**Pergola**  
Page 14



**Carport**  
Page 15



# Stratco Outback®

Verandahs | Patios | Carports | Sunroof

## Your Outdoor Lifestyle

Experience the best of outdoor living with a Stratco Outback® Verandah, Patio or Carport. Open your home to the outside and create a space that can be enjoyed throughout the year. Under a Stratco Outback you are protected from the elements, expanding your possibilities for entertaining, storage, an all-weather play area for kids or simply enjoying your garden.

## Invest In Market Leading Quality

Available in a wide range of high gloss colours to complement your home, the Stratco Outback range can span up to 9 metres between posts, for a clean, uncluttered finish.

## Genuine Peace Of Mind

Your durable Stratco Outback is protected by a 25-year structural warranty and 8-year paint finish warranty (conditions apply).



## Design Flexibility – As Unique As You Are

Your Stratco Outback is custom designed and made for your exact requirements. You can choose from flat, gable, curved or opening roof, in either attached or freestanding. Or you can choose a combination of styles in a wide range of colours to suit your home, budget and lifestyle.

## The Outback Advantage

- Personal in-house or in-store design consultation
- Custom manufactured individually for you
- Large spans provide a clear, uncluttered appearance
- Tested and certified by Stratco and Independent Engineers
- Available as a 'do-it-yourself' installation or a 'supply and installation' by an Authorised Outback Dealer
- Australian owned and manufactured.

## Intelligent Solutions.

### Smart Design

Stratco designers work hard to give you smarter solutions for your outdoor living space, including:

- Enclosed beams to discourage pests
- Minimal framework and fewer visible screws for a neater appearance and less cleaning.

### Intelligent Engineering

Stratco engineers work hard to give you intelligent solutions for your outdoor living space, including:

- Council-friendly plans for easy approval that meet or exceed building regulations
- Unique beam and bracket system for strength with impressive spans for uninterrupted views.



## 'Supply & Installation' In-Home Consultation

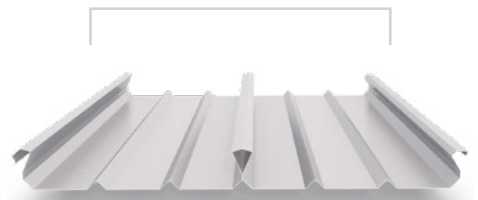
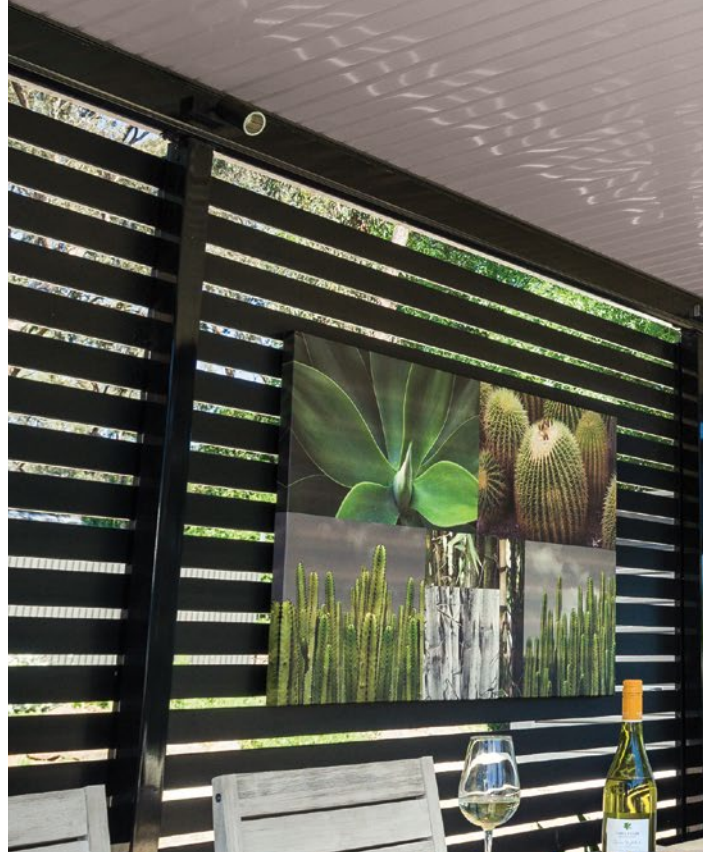
We can arrange a free, no obligation in-home consultation by an Authorised Outback Dealer to visit your home and custom design, supply and install your dream patio for you!



## 'Do-It-Yourself' In-Store Design Consultation

Our patio experts can create your dream D.I.Y. patio project, with helpful tips and advice so you can build it yourself. However you dream, let's make it come true.





**Stratco Outback® Deck**



## Stratco Outback® Flat Roof.

**Create a functional outdoor living area that will enhance your home and lifestyle.**

The versatile Stratco Outback® Flat Roof system can be configured to cover any area around the home. Available as either a freestanding structure or attached to the home, it can be used as a verandah, patio or carport.

The beams can span up to 8.4 metres and are available in either 120mm, 150mm or 220mm sizes. With the addition of the Outback Rooflite™ you can supply filtered light to the underside.



## Stratco Outback® Gable.

**Create the ultimate outdoor living area with the new generation Stratco Outback Gable.**

Featuring state of the art components and premium hardware for a modern look and easier and quicker installation.

The available roofing options include Outback Deck, Corrugated CGI, SmartPIU polycarbonate, and 50mm and 75mm Cooldek.

There is also the option of introducing a bank of motorised Sunroof louvres which means you can create a truly unique gable patio to suit your home and control the elements.

The Stratco Outback Gable is easily accessorised. The ridge bulkhead allows lights and fans to be neatly installed at the top of the structure.

An industry first, flush mounted LED strip lights for the ultra modern look are easily integrated.

There is a market leading range of architectural infill panel options that provide a modern appearance.



Backed by state of the art design  
and engineering software to provide  
you with the optimal solution.

# Outback Cooldek® Insulated Roofing.

Cooldek provides roofing, insulation and a beautiful ceiling all in one product.

## Insulated Advantage For Cooling Comfort

The insulating properties of Cooldek reduce heat from above on hot days and reduces noise from heavy rain.

You can choose from multiple insulation thicknesses, ranging from 50mm to 150mm for increasing levels of insulation and greater spanning capabilities.

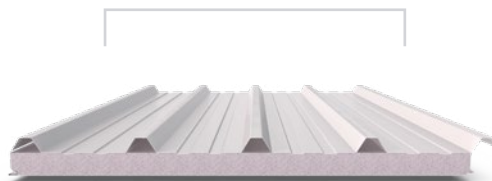
## Impressive Strength, Incredibly Long Spans

Exceptional strength allows Cooldek to span up to an impressive 9 metres unsupported which offers you an uncluttered appearance and uninterrupted views.

Cooldek Insulation Rating (R Value)						
Cooldek Profile	Mean Temp. (°C)	Panel Thickness (mm)				
		50	75	100	125	150
Classic	0	1.35	2.03	2.70	3.38	4.05
	14	1.27	1.91	2.54	3.18	3.82
	25	1.22	1.83	2.44	3.05	3.66
CGI	0	1.57	2.24	2.92	3.59	4.27
	14	1.48	2.11	2.75	3.38	4.02
	25	1.41	2.02	2.63	3.24	3.85

## Panel Options:

Choice of Cooldek Classic or Cooldek CGI profiles. Both profiles are available in 50, 75, 100, 125 or 150mm insulation thickness.



50mm Cooldek Classic Panel



50mm Cooldek CGI Panel



 STRATCO

**OUTBACK**

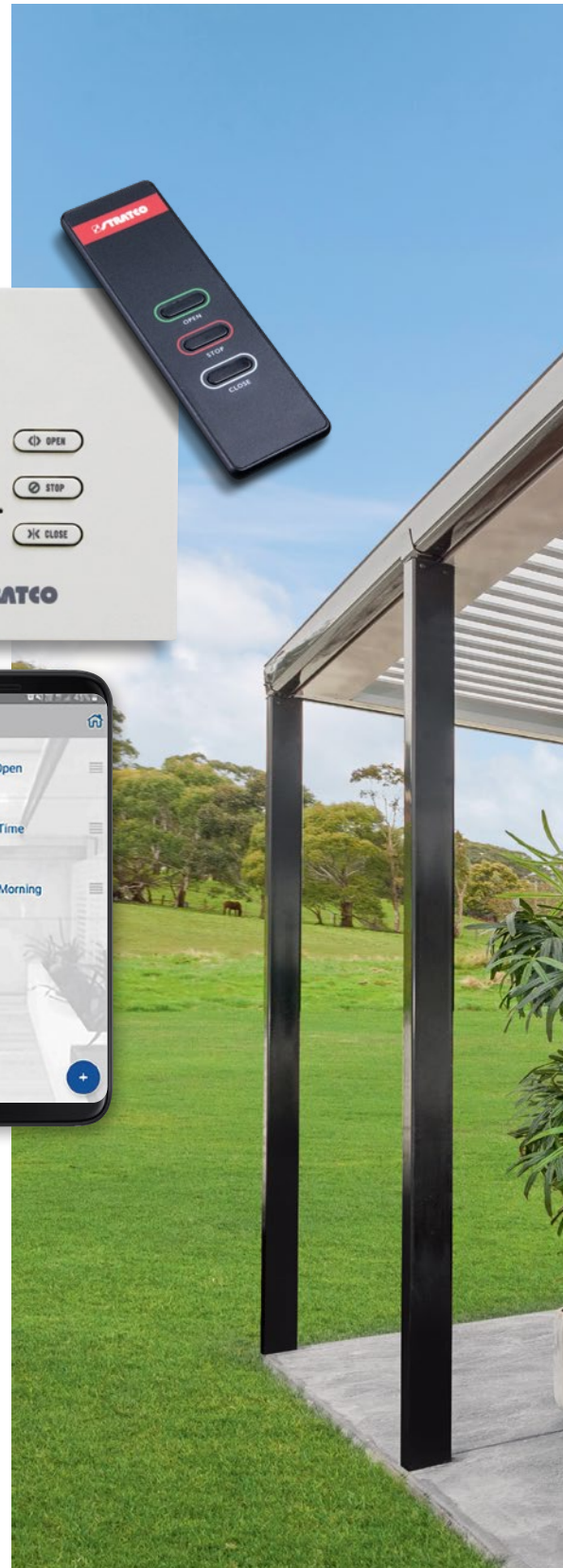
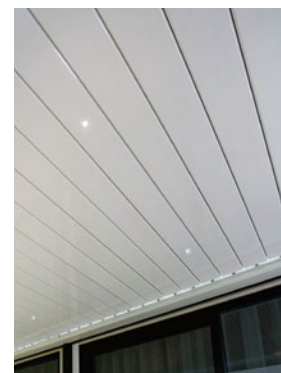
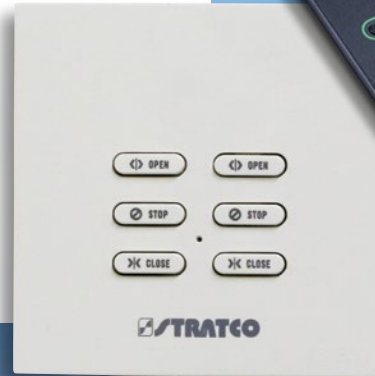
VERANDAHS • PATIOS • CARPORTS • SUNROOF



# Outback Sunroof.™

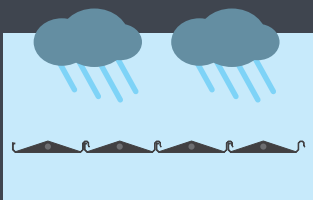
## For The Best Of Your Weather.

Easily control your outdoor living environment with the innovative Stratco Outback Sunroof. By adjusting the rotating louvres with either the handheld remote and wall mount switch, or a manual crank option, you can easily control the level of sunlight, shade and weather shielding. The system has an in-built rain sensor that will automatically close the blades if rain is detected. Plus, you also have the option of smart control via a user-friendly app on your smartphone.

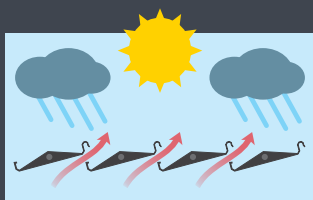




### Electronically Controlled Louvres



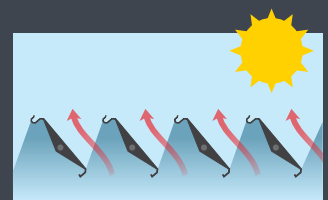
Closed for rain protection



Ventilation with rain protection



All available sun



Ventilation with sun protection



## Outback<sup>®</sup> Curved Roof.

### Show Your Contemporary Flair

The contemporary form of the Outback Curved Roof Verandah, Patio or Carport will add value and impart a sense of style and sophistication to your home, the curved roof can span up to 6.6 metres wide.

### Multispan For Roofing Material Choice

Choose from smooth Outback Deck, light and airy polycarbonate, or classic corrugated steel.

### Clearspan For Uncluttered Clean Lines

The Outback Clearspan Curved Roof minimises beams and rafters, this leaves the roof area clean and uncluttered with a ceiling-like appearance from beneath.



## Outback® Skillion Roof.

Skillion roofs are an increasingly popular option among homeowners looking to create a sleek, modern aesthetic.

Outback Skillion utilises Corrugated CGI and polycarbonate roof types. The roof can pitch can fall towards the front of the patio or reverse fall back to the attachment house side.

Skillion can be a simple yet effective way to maximise the amount of light in your entertainment space as well as maintain a sense of openness by preserving any skyline or views.



## Outback Pergola.

### Outback Pergola

Create an inviting open-air setting that will let the light in and improve the appearance of your home. Ideal for your delicate plants. With massive spans of up to 8 metres, the beams can be left open or fitted with a range of shade cloth colours and shade options.

### Pergola Shade Blade

Designed to attach to your pergola as an angled, fixed blade arrangement, Shade Blade lets the light and breeze in while providing shelter from the sun. For added privacy, Shade Blade can be installed as a side screen.



## Outback Carport.

### Protect Your Pride And Joy

Enjoy the feeling of entering a cool car on a hot day or avoid a drenching when trying to bring the shopping in. Choose from freestanding or house attached designs to really enhance the value and comfort of your home.

# Complete customisation.

The Stratco Outback range is designed as a complete customisable package, giving you the freedom to design your own style, shape, size and colour.

## Post Options

- Outback 68 x 68 Column
- Powdercoated 65 x 65 SHS
- Powdercoated 75 x 75 SHS
- Powdercoated 90 x 90 SHS
- Powdercoated 100 x 100 SHS
- Powdercoated 125 x 125 SHS
- Timber Finish:
  - Timber 3RT
  - Timber Wrap

## 140 x 140mm Timber 3RT

Scientifically engineered timber columns, manufactured by 3RT for use in Stratco Outback Patios. Available in Jarrah or Blackbutt.



## 140 x 140mm Printed Aluminium Post Wrap

Give your Outback patio a unique look with premium Merbau timber look finish Aluminium Post Wraps or powder coating to your own requirements.



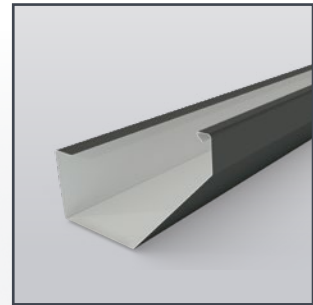
## Cast Gutter Mitres

Pre-made cast corners are neat, practical and aesthetically pleasing, providing a clean and modern look around the corners of your patio.



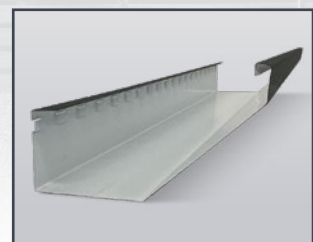
## Outback Edge Gutter

The smooth, straight lines and internal brackets give Outback Edge Gutter a striking aesthetic and modern appeal that suits all modern, contemporary, and architecturally designed homes.



## Outback Slotted Edge Gutter

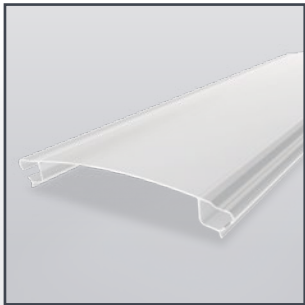
Available in Queensland only, to cater for locations which experience very heavy rainfall events.



All Outback designs are supported by in-house engineering and local manufacturing, offering you unrivalled design flexibility.

**Outback Rooflite®**

Allows natural filtered light to the underside of your patio. Available for Outback Deck and Cooldek.



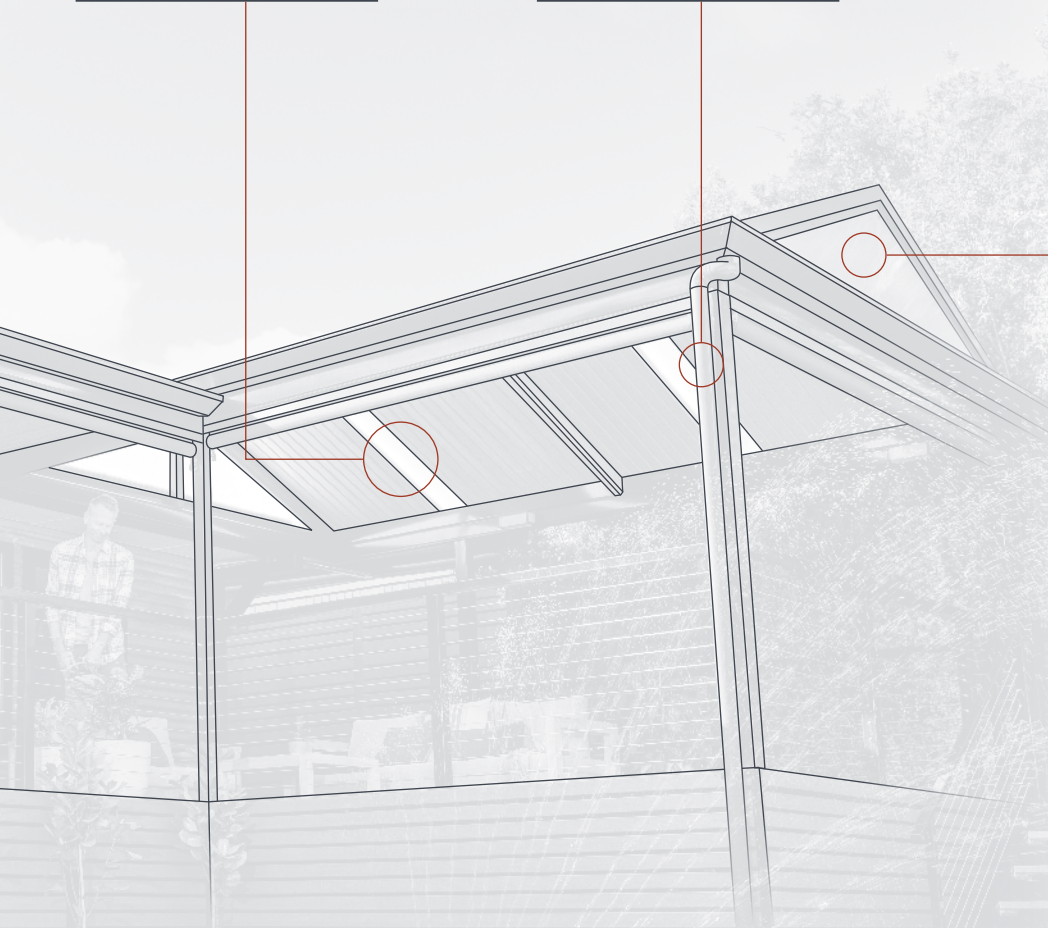
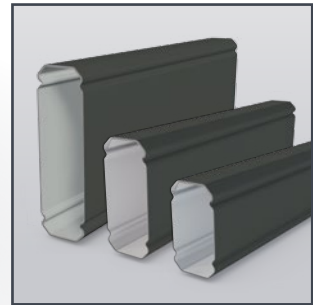
**Coloured PVC Downpipes**

Outback coloured PVC downpipes are co-extruded with an exceptional exterior grade finish – providing superior, long lasting protection and colour.



**Beam Options**

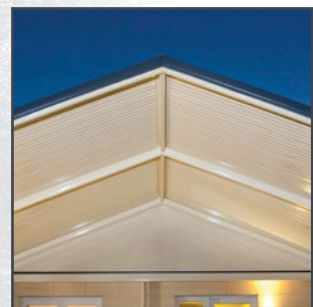
120mm, 150mm or 220mm Beams provide larger and less-cluttered patios with wide spans and fewer columns. Engineered for use in cyclonic regions.



**Gable Infill**

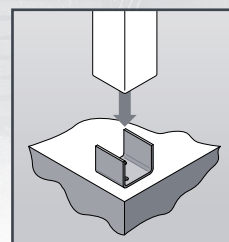
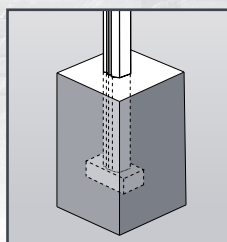
Choice of:

- Aluminium Slat – vertical or horizontal
- EasyClick Polycarbonate
- Fibre Cement



**In-Ground or On-Concrete Footings**

Outback Patios are designed with the posts 'In-Ground' (concreted into the ground) or 'On-Concrete' (with footing base plates bolted to a concrete slab).



# Attachment Options.

Stratco Outback Patios can be attached to an existing wall or the fascia of a home. They can be attached using fly over brackets or riser brackets – this provides the opportunity to gain additional height with an extension of up to 600mm from the traditional fascia height.



**Fly Over Bracket**



**Riser Bracket**

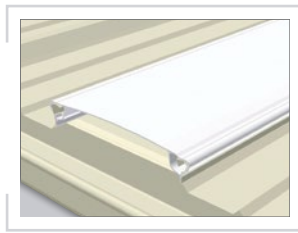
# Accessories.

## Enabling Year Round Use

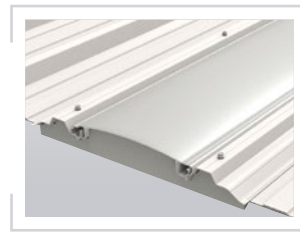
You can include lighting, fans or heaters to compliment your wonderful Outback living space. With the wide range of accessories available, you can enjoy your Outback lifestyle all year round.



**Ceiling Fans**



**Outback Rooflites**



**Cooldek Cool Light**



**Sunroof Smart Control**



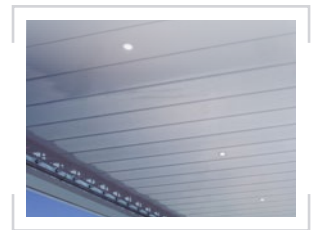
**Electric Strip Heaters**



**LED Strip Lights**



**Cooldek Downlights**

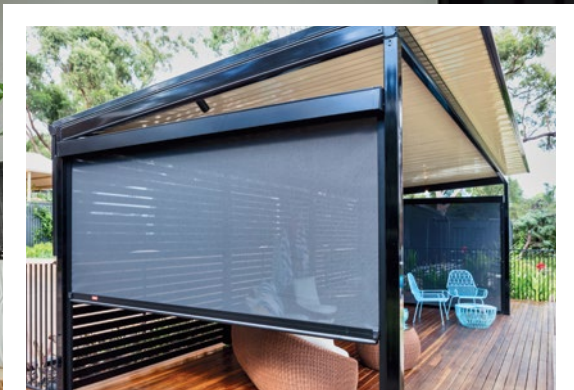


**Sunroof Louvre Lights**

# Colour Your World.

The beautiful Stratco Outback range offers 8 high gloss framework colours, a variety of high gloss cladding colour options and over 22 gutter and trim colours to match or contrast with your existing colour scheme. Speak to your Outback consultant for more great ideas and colour samples.





## Ambient Blinds.

### Ultimate In Stylish Patio Screening

Ambient Blinds from Stratco offer you a beautiful range of solutions to outdoor lifestyle issues such as sun glare, heat control, UV protection, privacy, and even insect control.

All frames are powder coated to an exterior grade quality, providing superior, long-lasting protection and colour to your outdoor area.

Choose from 12 different fabric colours to match or contrast with your existing décor. From glare reducing dark greys to clean and welcoming creams, and many natural tones in between.

You can also choose between 3 methods to extend and retract the Ambient Blinds - manual spring assisted action, manual crank driven action and motor driven with a switch or remote.

STRATCO

OUTBACK<sup>®</sup>

VERANDAHS • PATIOS • CARPORTS • SUNROOF



◀◀ SCAN THIS QR CODE TO FIND A STRATCO NEAR YOU

1300 155 155  
stratco.com.au

All brands and logos/images accompanied by © or ™ are trade marks of Stratco (Australia) Pty Limited. © Copyright January 2024

How To.



**MAINTENANCE** Regular maintenance is essential to maintain the good looks of all Stratco steel products and to ensure you receive the maximum life-span possible in your area. Washing with clean water must be frequent enough to prevent the accumulation of dust, salts, and pollutants or any other material that will reduce the life of the product. Stratco steel products that are regularly washed by rain require no additional maintenance. No Stratco steel structure or materials are recommended for use over, or in close proximity, to swimming pools or spas. No material that retains water (such as dirt or paving sand) should be placed against the columns. Care must be taken when determining the location of Stratco steel products so that they are not placed in close contact with sources of pollution or environmental factors that could affect the life of the steel. Refer to the 'Selection, Use and Maintenance' brochure for more information.