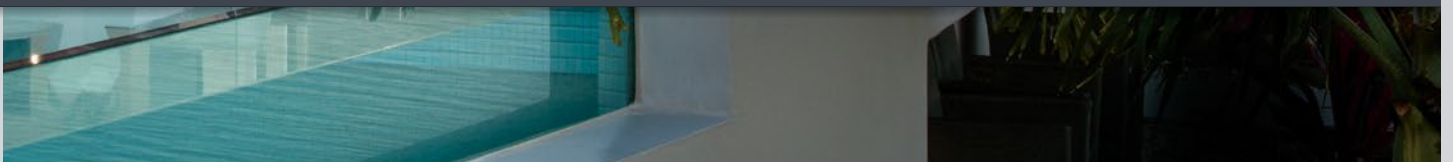




STRATCO
PAVILION®

Stratco Pavilion®

Grande | Allure





Pavilion Grande®

Alfresco Living Redefined

Classical Architectural Proportions

Experience outdoor living like never before with the unparalleled aesthetic of Pavilion. The classical architectural proportions of Pavilion created by larger columns and bulkheads, and the distinctive Edge gutter, respond to emerging trends for a more substantial looking structure.

Contemporary Palette of Colours and Finishes

The contemporary palette of colours and finishes of Pavilion has been inspired by nature, to reflect the earthy hues of the Australian landscape, and compliment the raw materials featured in today's architecture.

Meticulous Attention to Detail

With meticulous details such as Aluminium Composite panels, integrated LED lighting and concealed fasteners and downpipes, Pavilion adds an element of sophistication, elegance, and glamour to outdoor living.

Insulated Composite Roofing

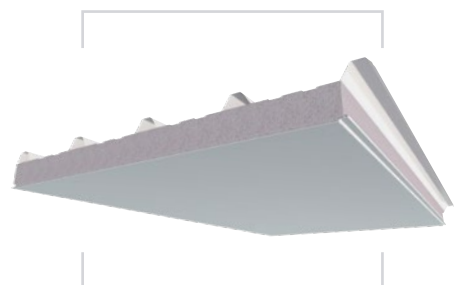
The smooth ceiling like finish of the insulated composite roofing further enhances the clean, contemporary design and thermal comfort of Pavilion.

A Dramatic Sense of Openness and Space

Engineering capabilities have been optimised to minimise the number of columns required and maximise roof spans, giving Pavilion a dramatic sense of openness and space. Suitable for new builds and retro-fit applications, freestanding or attached, Pavilion will assimilate with and enrich any home environment.

Ideal for Commercial Projects

The extremely wide spans and integrated lighting of the Pavilion Grande® make it perfect for commercial projects such as cafés, restaurants, hotels or any outdoor meeting space.



Cooldek Insulated Roofing



Pavilion Allure[®]

Stunning Architectural Appeal

Innovation in Opening Roof Patios

Stratco Pavilion Allure offers you the very best in all-season alfresco living with remote controlled opening louvres and a flat ceiling appearance when closed. It is sure to be a hit when entertaining, and bring a smile to your face when enjoying your quiet outdoor space.

The Allure is brilliant for rain, shade and ventilation control anytime of the year to maximise your outdoor enjoyment and genuinely extend your outdoor living season.

Ultimate Sunlight Control

With the handy remote control you can precisely adjust your louvre angles to control sunlight levels in your outdoor living space. From blocking the dazzling summer sun, to welcoming the warming winter sun - you have complete control at your fingertips.

Modern Design

Designed with smooth angular lines and solid columns and beams to give an impressive architectural appeal. The 250mm high beams and internal gutter give a clean bold appearance. Designed with market leading attention to detail, the Allure features countersunk, colour-matching screws and low profile bracketry. Allure combines the best of sleek modern design with a versatile outdoor living space.

Superior Rain Protection

Designed with excellent water management in mind, the Allure louvres have very deep side channels which direct water flow to internal box gutters and away through the downpipes. The rain sensor automatically closes all louvres at the first sign of rain, providing market leading rain and weather protection.

Excellent Ventilation

With your Allure louvres partly open, you can effortlessly manage the refreshing airflow in your outdoor living space. Angle toward the prevailing breeze to push air in and down, or angle away from the breeze to allow fresh air circulation. Enjoy a fresher outdoor experience anytime you want without losing any comfort.

Attractive Flat Ceiling

The reinforced, one piece extruded louvre doesn't warp, buckle or twist, and the anti-rattle weather strips inside each louvre overlap to provide a flat ceiling underside. This, combined with the 200mm wide gloss coated underside, provides a genuinely beautiful ceiling appearance.

Pavilion Allure[®]

All Season Weather Control

Fully Stratco Engineered

Every Allure is fully engineered and independently certified from the footings to the house attachments, and quoted in a very council friendly format. Each Allure can be customised to your requirements in an incredible variety of options - including wall or fascia attached, flyover or alcove options, or even freestanding designs.

Commercial Projects

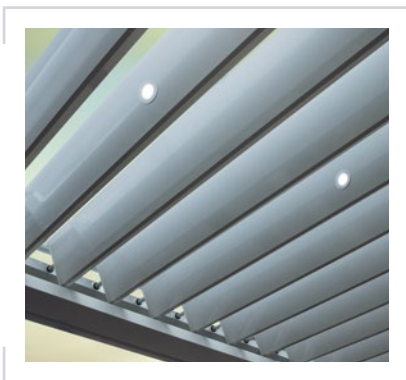
A single Allure unit can cover an impressive 24m², and a number of units can be joined together and operated by a single (replaceable) remote control. Available in the standard colours shown or in a wide range of custom colours to suit each project, or even in Aluminium mill finish. Perfect for a versatile entertaining area in restaurants, hotels, or apartment blocks.

Fully Installed or DIY

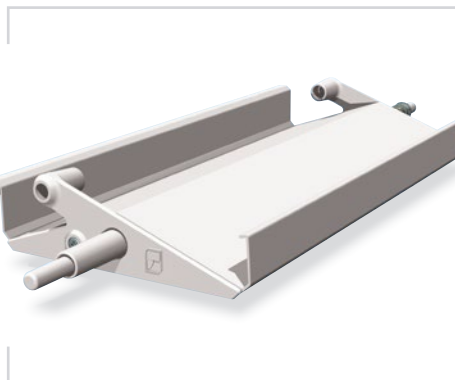
The clever design of Allure, with simple connection methods, combined with comprehensive installation instructions, make Allure suitable for an experienced do-it-yourselfer. Alternately, Stratco Authorised Dealers can manage the full installation process including council applications and house attachment details, and offer a 1 year installation warranty for complete hassle-free peace of mind.



STRATCO
PAVILION[®]



Fully integrated lighting solutions available.

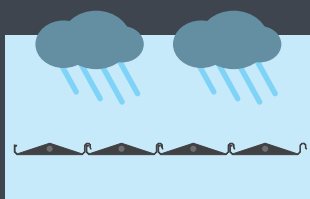


One piece extruded louvre with anti-rattle weather strips.

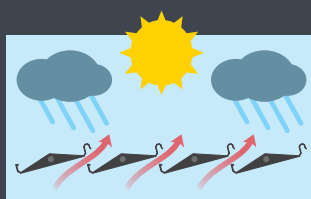


Wall mounted or hand-held remote operation.

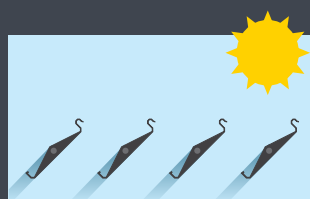
Electronically Controlled Louvres



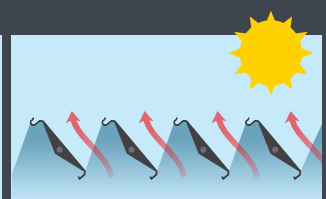
Closed for rain protection



Ventilation with rain protection



All available sun



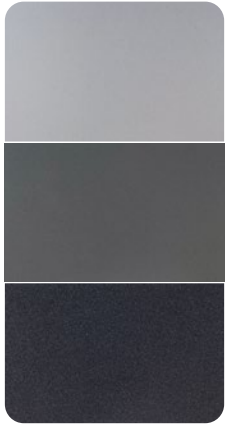
Ventilation with sun protection

Colour Range

To Complement or Contrast With Your Home

Pavilion Grande

Column & Bulkhead Colours



Sylvanite®

Silver grey with frosted metal appeal

SilverSlate®

Popular mid grey tone with eye-catching metallic fleck

Carbonite®

Starry night allure with metallic fleck on a deep grey

Cooldek® Roof Colours (Topside)



Off White

Smooth Cream

Merino

Banyan Brown®

Mist Green

Gull Grey

Slate Grey

Gun Metal Grey

Cooldek® Ceiling Colour



Off White
Satin finish

Edge Gutter Colours



Snowdrift™

Off White

Smooth Cream

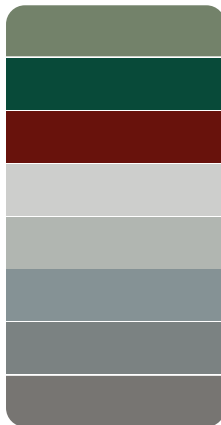
Merino

Birch

Driftwood

Banyan Brown®

Moss Vale Sand



Mist Green

Caulfield Green

Heritage Red

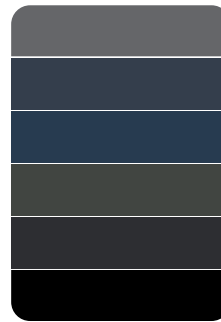
Lunar Grey

Gull Grey

Overcast™

Armour Grey

Cobblestone



Granite

Dark Stone™

Mountain Blue

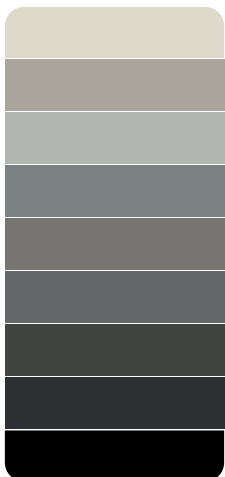
Slate Grey

Gun Metal Grey

Ebony

Pavilion Allure

Column & Bulkhead Colours



Off White

Birch

Gull Grey

Armour Grey

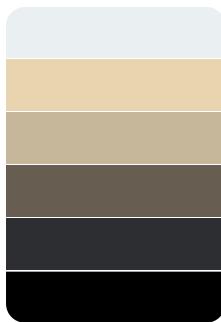
Cobblestone®

Granite®

Slate Grey

Gun Metal Grey

Ebony



Alpine®

Sand Dune®

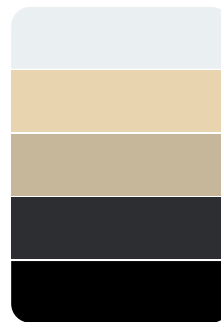
Desert™

Earth™

Thunder®

Deep Space™

Standard Louvre Colours



Alpine®

Sand Dune®

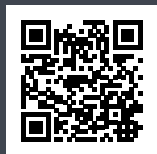
Desert™

Thunder®

Ebony

Allure components are coated in a durable, gloss powder coating in a choice of popular colours. Or you can opt for a custom colour to match your decor. An uncoated Aluminium version is also available for special projects. For coastal locations, a special 'Severe Environment' powder coating is available in some colours as an option.

Please check colour availability in your state.



« SCAN THIS QR CODE TO FIND A STRATCO NEAR YOU

1300 155 155
stratco.com.au

All brands and logos/images accompanied by © or ™ are trade marks of Stratco (Australia) Pty Limited. © Copyright April 2026

How To.



MAINTENANCE Regular maintenance is essential to maintain the good looks of all Stratco steel products and to ensure you receive the maximum life-span possible in your area. Washing with clean water must be frequent enough to prevent the accumulation of dust, salts and pollutants or any other material that will reduce the life of the product. Stratco steel products that are regularly washed by rain require no additional maintenance. No Stratco steel structure or materials are recommended for use over, or in close proximity, to swimming pools or spas. No material that retains water (such as dirt or paving sand) should be placed against the columns. Care must be taken when determining the location of Stratco steel products so that they are not placed in close contact with sources of pollution or environmental factors that could affect the life of the steel. Refer to the 'Selection, Use and Maintenance' brochure for more information.