



Each shelf can hold a maximum load of 45kg. Please carefully read and follow these instructions to assemble your cabinet.

ENSURE PROTECTIVE EYEWEAR AND GLOVES ARE WORN WHEN ASSEMBLING THIS UNIT.

**WARNING: SERIOUS INJURY CAN BE CAUSED BY TOPPLING FURNITURE.** To help prevent tip-over, we recommend you anchor this product to a wall or other suitable surface. Check anchors regularly.

## Step 1

### CHECK PARTS LIST

Tools required:

- 1 x Phillips Screwdriver
- 1 x Rubber Mallet



1 x Front Panel (Doors & Frame)



1 x Rear Wall  
(install this way up & face detail towards inside of cabinet)



2 x Side Panel

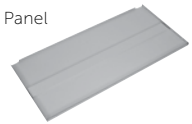
1 x Top Panel



3 x Shelves (have folded edge)



1 x Floor Panel



2 x Plastic Covers    16 x Shelf Supports  
10 x Screws            2 x Keys

## Step 2

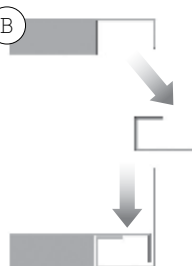
### FITTING AND SECURING REAR WALL TO SIDES

(A)



Position the Right Side Panel next to the Rear Wall.

(B)



View from above of how they slot together.

(C)



Secure with screws to hold side and rear together.

(D)



Repeat with other side.

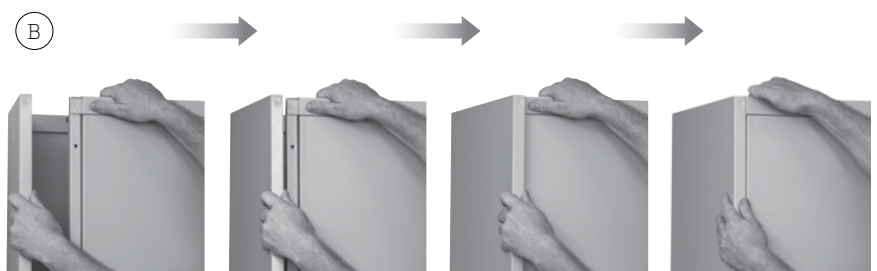
## Step 3

### FITTING FRONT PANEL TO SIDE PANELS

(A)



(B)



Slide Front Panel into the two sides and click into place.

## Step 4

### FITTING AND SECURING TOP PANEL

(A)



Locate the Top Panel - the front has the 'push-through' slots. Lift the Top Panel into place from the inside.

(B)



Fasten to the Back Panel with 3 x screws. Then, use a screwdriver to push the 'push-through' slots shown at 'A' into the Front Panel.

## Step 5

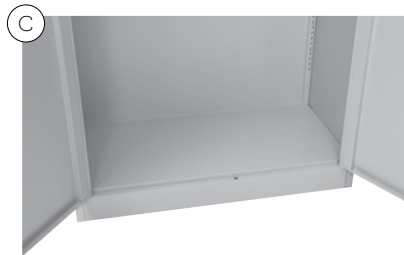
### FITTING AND SECURING THE FLOOR PANEL



Place the Floor Panel into position with the cutouts facing the front.



Ensure the front lip goes over the top of the Front Panel.



Turn the cabinet onto its side and fasten the Floor Panel with 3 x screws.

## Step 6

### FITTING THE SHELVES



Turn the cabinet upright and place the Shelf Supports into the side rails of the cabinet - 4 per shelf at the same height.

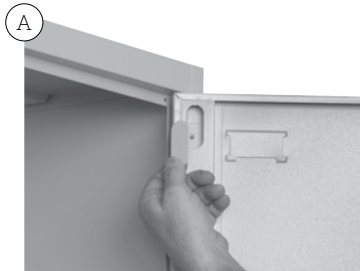


Place the Shelves onto the supports and ensure that they are locked into place.



## Step 7

### FINISHING OFF



The doors have a spring loaded hinge to allow removal at any time. A cover is supplied for these access points. Simply push into place.

B

Your cabinet is now finished and supplied with 2 x keys.

